



Hanshin Tigers GINOZA Village PROJECT

This year marks the 20th anniversary of the Hanshin Tigers spring camp in Ginoza, which is held during the month of February. The whole village will be decorated in the Hanshin colors, and Ginoza Roadside Station is no exception! We are holding a number of events for your enjoyment, and will be selling unique Hanshin merch that you won't find anywhere else! Don't miss this chance, visit us at Ginoza Roadside Station!

Scan
 for details !



<https://ginozanavi.com/ginozacamp>



Tigers Thalasso

2/20~26

Limited
 Supply

Place ⑦ Tourist Information Center

Get a voucher for discount admission to Tapic Thalasso Center Ginoza (reduced from ¥2,400 to ¥1,500) when you purchase Hanshin Tigers collab merch at the Hanshin Tigers POP UP SHOP⑦ or the general information booth on the camp grounds! Use the voucher at Thalasso, and receive a special piece of merch as a present!



Digital Stamp Rally

2/15~

Limited
 Supply

Exchange Point ⑦ Tourist Information Center

Collect digital stamps located at the Exhibition Hall, and at two locations in the Ginoza Village Baseball Stadium with your smartphone and get a special piece of Hanshin merch! Bring your completed stamp collection to the Tourist Information Center! ※You are responsible for data costs.



Gekkan Tigers Cover Photo Collection

2/1~

Free
 Admission

Place ① Bayview Hall (3F)

View a special exhibition of the cover photos of the past year's Gekkan Tigers magazine. Also on display is a collection of photos of previous camp seasons in Ginoza, to commemorate the 20th anniversary of the camp.



2023 Hanshin Tigers Spring Camp NEW Collab Merch ON SALE NOW!

Place ⑦ Tourist Information Center
 Hanshin Tigers POP UP SHOP

2023 Hanshin Tigers Spring Camp merch is on sale NOW at the Hanshin Tigers POP UP SHOP. Our Hanshin merch webshop is planned to open from March!

※Supplies are limited.



Hanshin Tigers SPRING CAMP IN GINOZA

Scan here
 our webshop ▶



GINOZA 500 YEN FITNESS

2/18 10:00~ Yoga course for all levels

2/25 11:00~ Body building for walking

Place ① 3rd Floor Bayview Hall

※We offer courses with English guidance!

Please scan the QR on the right to inquire for more info!

Get back on the road the health with our fitness courses, on offer for only ¥500 per session. Make a reservation by scanning the QR code above. Our courses last about 1 hour, and are available on a first come first serve basis, with a maximum of 20 people. Please come in loose fitting clothing, and bring a towel and something to drink.



Please help us prevent the spread of COVID-19 by wearing a mask and washing your hands regularly.
 All prices include tax.



3F



1 Bayview Hall

Open daily from
9:15 to 18:00

2F



2 Lounge & Terrace

Open daily from
9:15 to 18:00



3 COFFEE&BREAK GINOZA FARM LAB

Open 10:00 to 17:00 L.O. 16:00
Weekends & Holidays
until 18:00 L.O. 17:00
Closed Wednesdays

For queries, please send an
email to the following address.

toi-form@ginozanavi.com



道の駅「ぎのざ」
GINOZA ROADSIDE STATION

1～11 Ginoza Village Tourism Association

〒904-1304 1646-4 Kanna, Ginoza
Village, Okinawa Prefecture



12～18 Mirai Ginoza

〒904-1304 1633 Kanna, Ginoza
Village, Okinawa Prefecture



※We reserve the right to close in the
event of typhoons and for maintenance.

8 Kids' Room & Nursing Space



Nursing space open daily 9:15 to 18:00.
Kids' play room available from 10:00 to 12:00 & 13:30 to 16:00.
Admission is ¥500 per hour for children ages 0-3.



11 Splash Park

Open daily from 10:00 to 17:45.
Closed on weekends & holidays
from 12:00 to 13:00 for maintenance.

10 Seawall Terrace Showers and Changing Room

Open daily from 9:15 to 18:00

9 Giino-kun Land

Playground open daily.
Toilets available from 9:15 to 18:00.

DIGITAL
Version



1F



5 Multipurpose Hall

Open daily from
9:15 to 18:00



information center



Available in the
Tourist Information
Center!

MADE IN GINOZA

7 Tourist Information Center (Ginoza Village Tourism Assoc.)

Open daily from 9:15 to 17:30
May close in the event of
maintenance, typhoons, etc.

Kids' Room admission,
Roadside Station
commemorative tickets
and Infra Cards are on offer
in the Tourist Information
Center!



12 Shokudo Manjiro

Open daily from
11:30 until sold out
Closed Wednesdays



13 Mirai Farmers' Market

Open daily from
9:30 to 18:00
Closed for the New Year



14 Daiyamaru

Open daily from
12:00 to 19:00
Closed Wednesdays



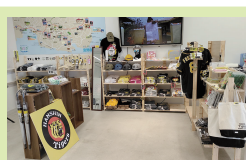
15 Kuuyuu

Open daily from
9:30 to 18:00
Closed Tuesdays



6 Exhibition Hall

Open daily from
9:15 to 18:00



Hanshin Tigers POP UP SHOP

Open daily from
9:15 to 17:30

Limited-edition
Hanshin merch



Ginoza Sweet Shop

Open Tuesday to Sunday
9:30 to 17:00
Monday 13:00 to 17:00
Closed for the New Year

Cakes and ice cream!



Kirari Ginoza SHOP

Open daily from
9:15 to 17:30

Only-in-Ginoza merch



16 Chura-ten

Open from 10:30 to 16:00
Weekends & Holidays
10:30 to 18:00



17 Tenpusu Shokudo

Open from 11:30 to 16:30
Sunday until 18:00
Closed Mondays



18 Ginoza Garden Center

Open daily from
10:00 to 18:00
Closed Mondays

